



## Standard CO2 Welding Robot Flexible Robotic Welding Systems 1500MM Boom

### Our Product Introduction

#### Basic Information

- Place of Origin: Guangdong, China
- Brand Name: Jin Hongxiang
- Certification: CE
- Model Number: 1510
- Minimum Order Quantity: 1 set
- Price: Negotiable
- Packaging Details: Export safety wooden case
- Delivery Time: 5-10 days or negotiation
- Supply Ability: 50 Set/Sets per Month



#### Product Specification

- Condition: New
- Applicable Industries: Building Pipes, Process Products, Automobile Sheet Metal,
- Warranty Of Core Components: 1 Year
- Core Components: PLC, Precision Servo, Robot Body, Welding Power Supply, Control Cabinet
- Product Name: Industrial 6 Axis Arm Welding Robot
- Warranty: 1 Year
- Key Selling Points: Flexible, Stable, Durable And High Precision
- Weight (KG): 170
- Voltage: 380V
- Current: 50-60HZ
- Dimensions: 550\*785\*410mm
- Usage: Welding
- Advantage: High Speed Stability

## Product Description

### Standard CO2 welding robo

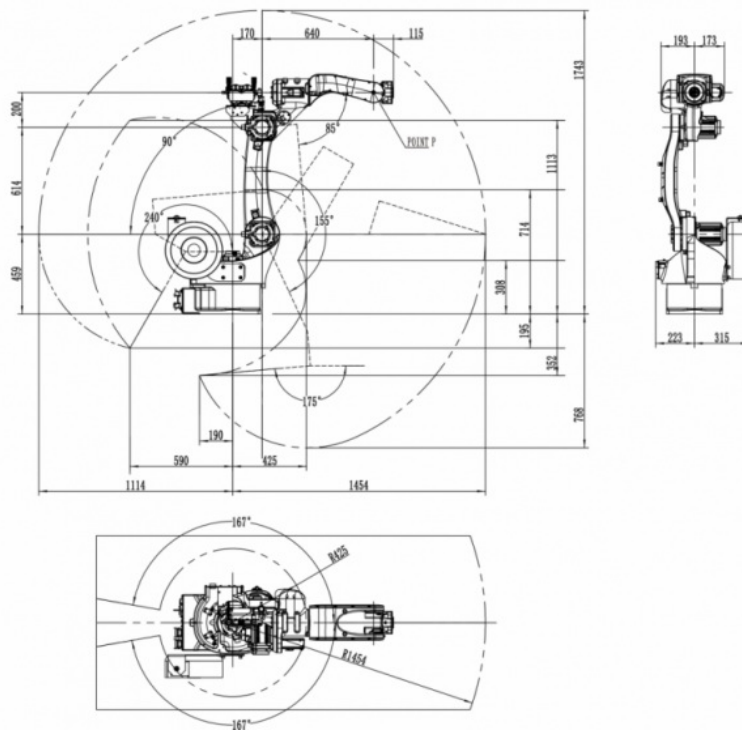
#### Configuration:

1. Robot body, 1 set of CRP1410-10 (6-axis linkage). The boom is 1500MM long. One robot base.
2. Control cabinet, CRP (G4 generation) drive control integrated control cabinet, and one 6-axis linkage coordination cabinet.
3. Protective transformer, controller 3KW is equipped with one anti-interference isolation protection transformer.
4. Interconnect lines, 2 groups of 6m connecting control lines.
5. Programming teaching device, 6m line teaching device, and one touch digital display.
6. One control box, standard start stop control box, and two 6m wires.
7. Special welding machine for robot, one Meggitt 350 standard carbon dioxide welding machine.
8. Welding gun, one set of anti-collision welding gun for robot.
9. One group of welding cable, 3m cable and 6m control line.

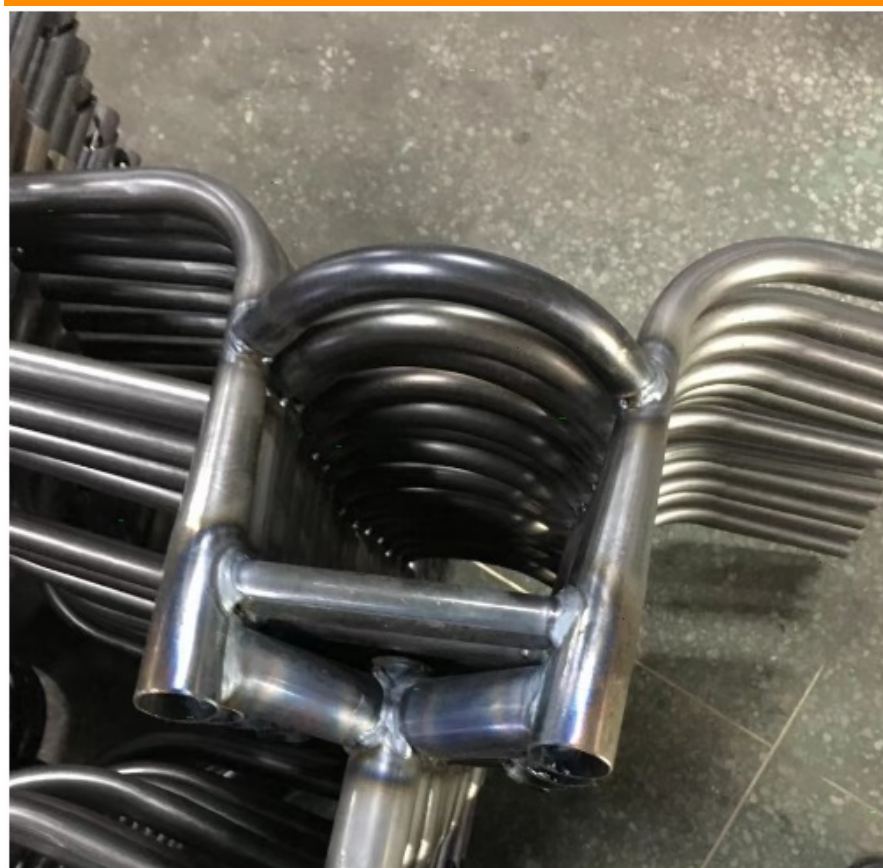
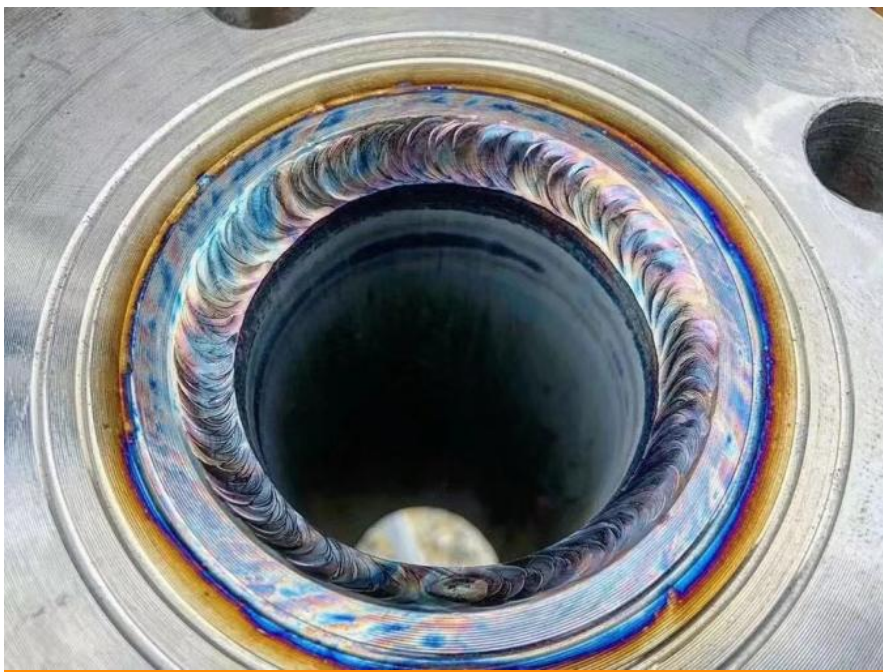
#### Performance characteristics of robot body

- The arm span is 1.5 meters. The design is highly compact and can be flexibly installed on the ground or upside down.
- With large working space, fast running speed and high repeated positioning accuracy, it is suitable for wide range of welding applications.
- The safety emergency stop board independent of the control system is equipped with, and the safety relay circuit is adopted to provide double-circuit emergency stop to ensure the reliability of emergency stop.
- The robot body adopts highly flexible special cable.
- Built-in three-phase transformer makes 380V and 220V isolated to help the power supply more stable. Built-in three-phase filter can effectively improve the performance of EMC and EMI.
- The robot body is with dual-circuit gas pipe to meet the welding demand.
- The inner diameter of 6-axis middle hole is 44mm, it can meet the installation requirements of water-cooling torch and bellows torch.
- Highly flexible welding cable is built-in.

MOTION RANGE DIAGRAM



#### Welding workpiece



#### ROBOT BODY TECHNICAL PARAMETERS

Model		CRP-RH14-10-W
Arm form		Vertical multiple joints
Degree of freedom		6 axis
Maximum payload		10KG
Repeated positioning accuracy		±0.08mm
Maximum reaching distance		1454mm
Robot body weight		170KG
Installation mode		Ground,upside down mounting,wall mounting
	axis 1	Ground/upside down mounting-167°~167°,wall mounting -30°~30°

Maximum travel	axis 2	-155°~90°
	axis 3	-175°~240°
	axis 4	-190°~190°
	axis 5	-105°~130°
	axis 6	-105°~130°
Maximum axis speed	axis 1	169°/s
	axis 2	169°/s
	axis 3	169°/s
	axis 4	301°/S
	axis 5	220°/s
	axis 6	743°/S
Allowable torque	axis 4	20N.m
	axis 5	5 20N.m
	axis 6	11N.m
Allowable moment of inertia	axis 4	0.5kg.m2
	axis 5	0.5kg.m2
	axis 6	0.16kg.m2

#### corner of the warehouse



#### "Our purpose:

Every device, we must do better!!

#### reminder:

Our products are constantly upgraded and improved.  
If the color or structure changes, the actual object shall prevail"



**Dongguan Jinghongxiang Automation Equipment Co., Ltd.**



13925780098



jhx16888@gmail.com



wire-bendingmachine.com

No. 78, Shangzhong Road, Shangdi Industrial Zone, Liaobu Town, Dongguan, Guangdong, China